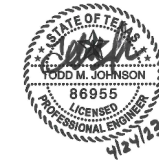


Asset Walk 6-9 weeks

Project: IBP 6100 Make Ready Suite 3600

Date of Walk-Thru	7/31/2023
AHU/RTU	
RA & OA damper installed	Done in Shell.
Piping complete	Done in Shell.
Ductwork Connections Finalized and Sealed to Unit (OA, Return, Relief, Supply)	Done in Shell.
Power Landed to Unit/VFD	Done in Shell.
Comments	
Exhaust Fans	
Unit Mounted to Correct Curb/Location	No, see marked plans for details.
Disconnect Available	No.
Power to Fans/VFD	No.
Duct connected to fan/curb	No.
Motorized Dampers Installed	N/A
Comments	
Fan Coils/Small Inline AHU/HP/WSHP	
Unit Mounted in correct Location/Configuration	Done in Shell.
Power to Unit	Done in Shell.
Supply & Return Duct Installed	Done in Shell.
Outside air Duct Installed	Done in Shell.
Comments	
Return Air Path (marked up drawing attached)	
Are there enough transfer openings	Yes.
Are they sized correctly	Yes.
Are they in the correct location	Yes.
Comments	
VAVs	
VAV Hanging & Present	Yes.
Inlet Duct connected	Yes.
Discharge Duct connected	Yes.
Unit Powered & Operational	Yes.
Piping to reheat coil complete	N/A
Balance dampers installed and open	Yes.
Comments	



PROJECT NO.: 522-008
DRAWN BY: RR / MK
CHECKED BY: KS
R.S.F.: 8.356

BILLINGSLEY
COMPANY

**INTERNATIONAL BUSINESS
PARK
SPEC SUITE 3600**

6100 WEST PLANO PKWY
SUITE 3600
PLANO, TX 75093

NO.	ISSUED FOR:	DATE:

LANDLORD/CLIENT REVIEW ISSUE DATE: 04/24/23
BID ISSUE DATE: 04/24/23
PERMIT ISSUE DATE: 04/24/23

Purdy - McGuire
Mechanical - Electrical Engineers
17300 North Dallas Parkway
Suite 3000
Dallas, Texas 75248-1147
Firm Registration # F-1511
Tel: 972/239-5357
Fax: 972/239-5231
www.purdy-mcguire.com

© 2007
PMI JOB NO. 22004.001
PROJECT MGR. TODD JOHNSON
THIS DRAWING SHALL NOT BE REPRODUCED FOR ANY PROJECT OTHER THAN THE PROJECT NOTED IN THE TITLE BLOCK, WITHOUT THE WRITTEN CONSENT OF PURDY-McGUIRE, INC. DALLAS, TX

DRAWING TITLE:
**LEVEL 03 MECHANICAL
PLAN**

DRAWING NUMBER:

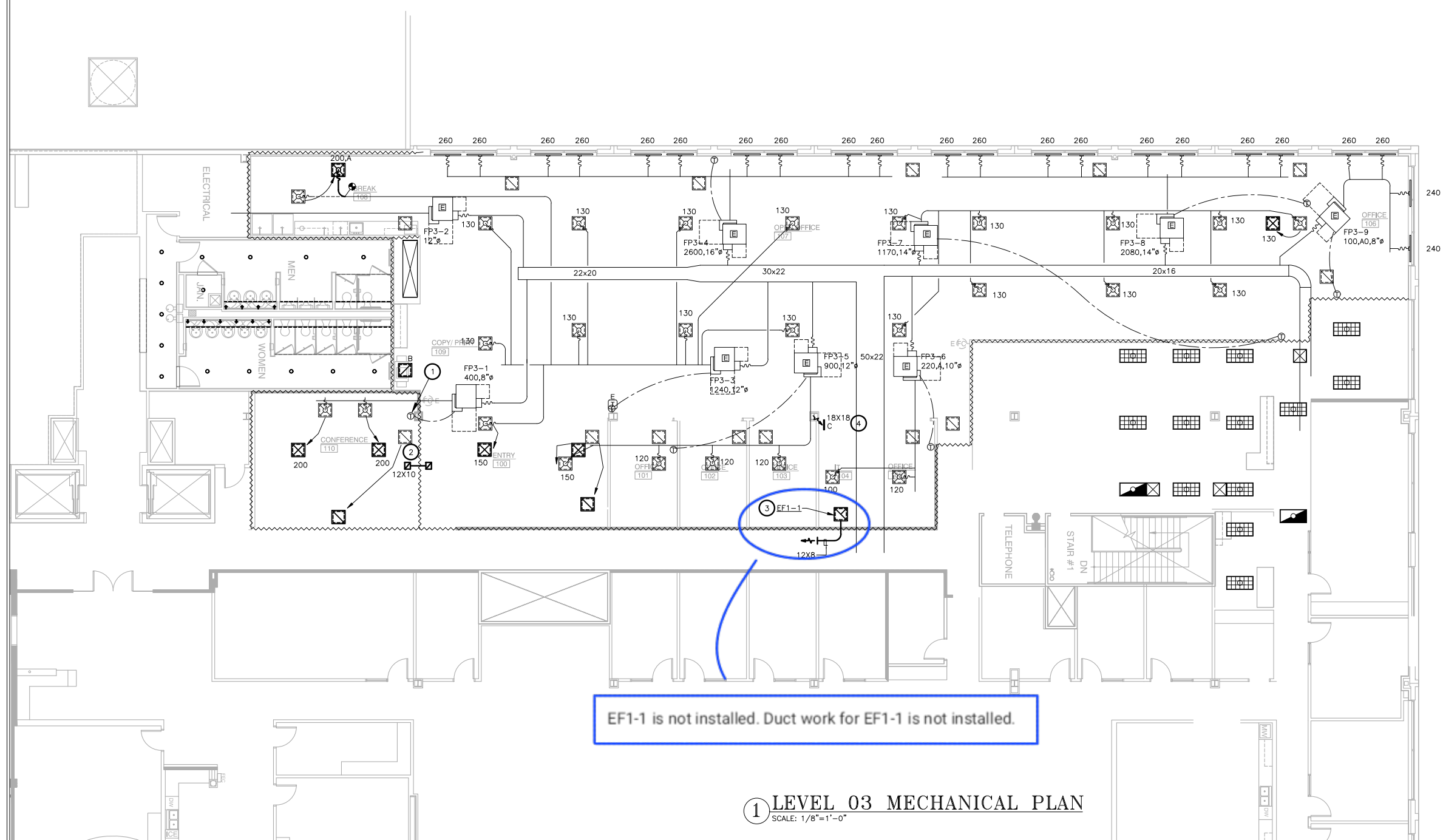
M2.03

NOTES BY SYMBOL (X) :

1. RELOCATE EXISTING THERMOSTAT TO NEW LOCATION AS SHOWN ON PLAN. CONFIRM THAT THE THERMOSTATS ARE ASSOCIATED WITH THE TERMINAL BOX AS SHOWN ON THE DRAWING BEFORE RELOCATING AND ARE IN WORKING ORDER.
2. PROVIDE ACOUSTICALLY LINED RETURN AIR BOOT AS HIGH AS POSSIBLE ABOVE CEILING. INSTALL INLET AND OUTLET 90 DEGREE ELBOWS FACING UPWARD. SIZE PER PLANS.
3. INSTALL NEW EXHAUST FAN AT SUSPENDED CEILING. SUPPORT FAN FROM STRUCTURE ABOVE USING HANGER RODS WITH VIBRATION ISOLATOR PER EACH ROD. EXTEND EXHAUST DUCT FROM OUTLET AT EXHAUST FAN AS SHOWN ON DRAWINGS.
4. INSTALL TRANSFER AIR GRILLE AT BOTTOM OF DOOR. EXACT LOCATION TO BE DETERMINED BY ARCHITECT PRIOR TO ROUGH-IN.

EXISTING DEMISING WALL TO REMAIN- CONTRACTOR TO ENSURE THERE IS A RETURN AIR PATH SIZED AT 500CFM FOR TOTAL SUPPLY AIR CFM TO RETURN BACK TO SERVING AIR HANDLER UNIT.

REFER TO SHEET M0.01
FOR GENERAL NOTES,
SCHEDULES AND SYMBOLS.



EF1-1 is not installed. Duct work for EF1-1 is not installed.

1 LEVEL 03 MECHANICAL PLAN
SCALE: 1/8"=1'-0"